

August 9, 2019

Dear Team Administrators, Coaches, and Participants,

Welcome to the 2019-2020 academic year, we are excited to continue to host your practices and events here at the Campus Recreation Complex! Please take this opportunity to review our procedures for accessing the facility and parking below.

**Facility Access (additional information on next page)**

- Every individual team member and participant must obtain a CRC Access Card and bring it with them each time to enter the Campus Recreation Complex and gain access to the pool(s) for practice.
- To obtain a CRC Access Card and/or activate your current CRC Access Card, team members should visit the Member Services desk (located in the CRC main lobby).
- The cost for an initial or replacement CRC Access Card is \$30. We accept Visa, MasterCard, AMEX, Discover, and checks (no cash).
- Coaches will regularly submit a roster to the Member Services Coordinator with each participant's full legal name, date of birth, gender, and contact information to ensure team access is accurate and up-to-date.

**Parking (additional information on next page)**

- The CRC offers parking permits on behalf of the Georgia Institute of Technology Office of Parking and Transportation Services (PTS). There is a three month minimum purchase with parking (when purchased in any month between August through April).
- **CRC Evening Only Parking Permit (\$15/Month)** - Permits are valid in the W06 zone (street, parallel parking along Tech Parkway) Monday-Thursday 4:30pm-8:00am and weekends beginning Friday at 4:30pm through Monday at 8:00am. \*Additional W06 zones are located off of Marietta Street.
- **CRC Day (24 hour) Parking (\$30/Month)** - Permits will be valid in the W06 zone (street, parallel parking along Tech Parkway) 24 hours per day, 7 days per week. \*Additional W06 zones are located off of Marietta Street.
- Please note space may be limited or unavailable during CRC or campus special events. During those times, overflow parking may be available for W06 permit holders in W04 or W01 zones.
- Georgia Tech PTS also offers visitor and short-term parking. More information can be found at <http://pts.gatech.edu/visitors>. We recommend the Area 2 zone on Ferst Drive, located next to the Student Center.

As always, thank you for choosing our facility to host your organization's practices and events. If you have any questions, please feel free to reach out to our Member Services Team and we would be happy to assist you.

Priscilla Gaona  
Member Services Coordinator  
Georgia Institute of Technology | Campus Recreation  
404-894-1616 | [info@crc.gatech.edu](mailto:info@crc.gatech.edu)

**Campus Recreation Complex**

Georgia Institute of Technology  
Atlanta, Georgia 30332  
PHONE: 404.385.7529 FAX: 404.894.9981  
[www.crc.gatech.edu](http://www.crc.gatech.edu)

## **Additional Facility Access Information**

### Rosters

- Each organization is responsible for maintaining and providing an accurate roster of participants for access to the CRC.
- CRC staff will regularly request each group's administrators and/or coaches to review the current roster and provide updates as necessary.
- An accurate roster is required to ensure all participants enjoy access to the facility for practice.

### Damaged & Lost Cards

- The CRC will replace, at no charge, any worn and nonfunctioning CRC Access Card that exhibits normal wear and tear.
- The CRC will charge for abnormal wear and tear, photograph change, lost, or stolen CRC Access Cards (\$30 replacement fee).
- Damaged CRC Access Cards will need to be exchanged for the new CRC Access Card.

### Practice Times

- Access is granted for the purpose of participating in your organization's practices and events only.
- Participants do not have CRC membership privileges and should not utilize other areas of the facility.
  - Participants or parents who abuse this access may have their access privileges suspended.

### Viewing Practice

- Parents and chaperones may view practices from the stands accessible on the 2<sup>nd</sup> floor of the CRC.

### Parents

- Swim group parents may purchase a \$10/day guest pass to utilize the CRC to workout.
  - Parents should visit the Member Services desk with their swimmer to purchase a guest pass. A government issued ID is required to purchase.

## **Additional Parking Permit Information**

- The Campus Recreation Center sells permits as a service on behalf of the Office of Parking & Transportation Services. Please review and abide by all policies found at <https://pts.gatech.edu/parking>.
- Please carefully check and confirm your practice times. If you plan to park for practice prior to 4:30pm during the week, you may consider purchasing a day pass.
- Permits are intended to be utilized only during team practice or events. Abuse may result in the discontinuation of the permit and/or the customer's vehicle being subject to a citation and/or towing.
- To assist in making your experience easy, please have the following required information ready when you purchase your permit:
  - **Make, Model, Year, Color and License Plate Number**
- Permits will be sold in a minimum of **3-month increments**, except when the permit is purchased within 3 months of the end of the parking year.
  - The parking year is August 15, 2019 - August 14, 2020. No permits may extend beyond that date August 14, 2020.
  - Permits cannot and will not be sold for any less than a full month (i.e. no half months).
- If you do not currently have a permit, please consider parking in the Visitor Parking lot on the day in which you come to purchase your permit to avoid receiving a citation.
- You may consider downloading the *ParkMobile* application, which allows you to pay for short-term metered parking on-campus via your phone.
- CRC parking permits are valid in the **W06** zone only (street parking along Tech Parkway or in lots along Marietta Street) and **do not permit access to the CRC W10 deck**.
- The permit is not valid in handicap spaces (without a proper GT handicap decal), reserved, service vehicle, metered spaces, or 'no parking' zones.
- A valid hangtag/permit must be displayed while parked on campus.
- CRC permits will only be sold at the CRC Member Services desk.
- **Permits are non-transferable, will not be pro-rated, and are non-refundable.**
- Parking location availability is subject to closures for events, construction and safety.
- If a participant has a current citation, the citation must be paid prior to purchasing a permit.
- If a participant receives a citation for a parking violation on Georgia Tech's campus, and the participant wishes to dispute the citation, the member must appeal through the Parking & Transportation Services recognized process, which can be found at <http://appeals.pts.gatech.edu/Appeal/Guest>
  - Citations given to coaches or any other person are not considered an appeal.

## Directions to the GA Tech Campus Rec Center (CRC)

The address for the Campus Rec Center (CRC) is:

750 Ferst Drive

Atlanta, GA 30332

[www.crc.gatech.edu](http://www.crc.gatech.edu)

**Traveling South on 400 or 85** – You will miss most of the traffic if you take the 17th Street exit and go right. You will pass Atlantic Station on your right. Travel about 1 mile and you will pass IKEA on your left. Take a left at the light on Northside Drive. Stay on Northside Drive and you will pass McDonalds, Burger King, and 10th street. At the fork, stay left on Tech Parkway and the CRC will be on your left. You can park on Tech Pkwy in the W06 area if you have a permit and walk around the corner to the front of the building. If you do not have a permit go to the next light and go left(Means). This street dead ends into Ferst Drive in 100 feet.

**Entrance to CRC:** Take a left on Ferst Drive and the entrance to the CRC will be on your left.

**Entrance to Parking Lot:** Take a right on Ferst Drive and the entrance to the visitor pay parking lot will be on your left. This lot charges \$2.00 per hour.

**You must have a permit to park on Tech Parkway. If you do not have a permit, park in the visitor deck off of Ferst Drive.** You may get a parking ticket if you park some place else. If you park on Tech Parkway, you will have to walk around the building to the front entrance or if you park in the visitor lot you will have to walk across the street to the front of the CRC. It is a short 5-minute walk.

**If you are traveling on 75 South from Marietta,** exit at Northside Drive and go right.

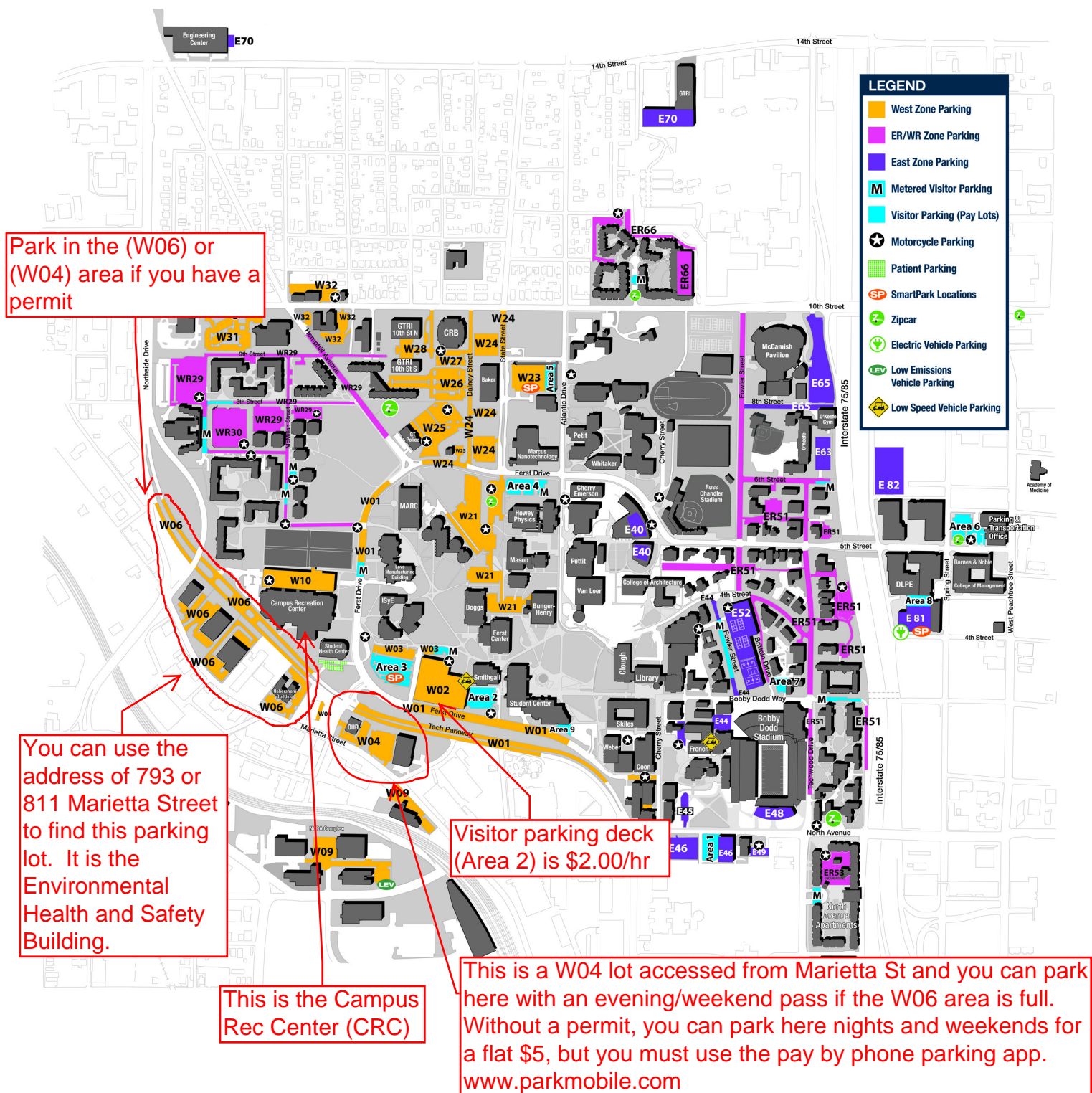
Stay straight and you will pass McDonalds, Burger King, and 10th street. At the fork, stay left on Tech Parkway and the CRC will be on your left. You can park on Tech Pkwy in the W06 area if you have a permit and walk around the corner to the front of the building. If you do not have a permit go to the next light and go left(Means). This street dead ends into Ferst Drive in 100 feet.

**Entrance to CRC:** Take a left on Ferst Drive and the entrance to the CRC will be on your left.

**Entrance to Parking Lot:** Take a right on Ferst Drive and the entrance to the visitor pay parking lot (Area 3)will be on your left. This lot charges \$2.00 per hour.

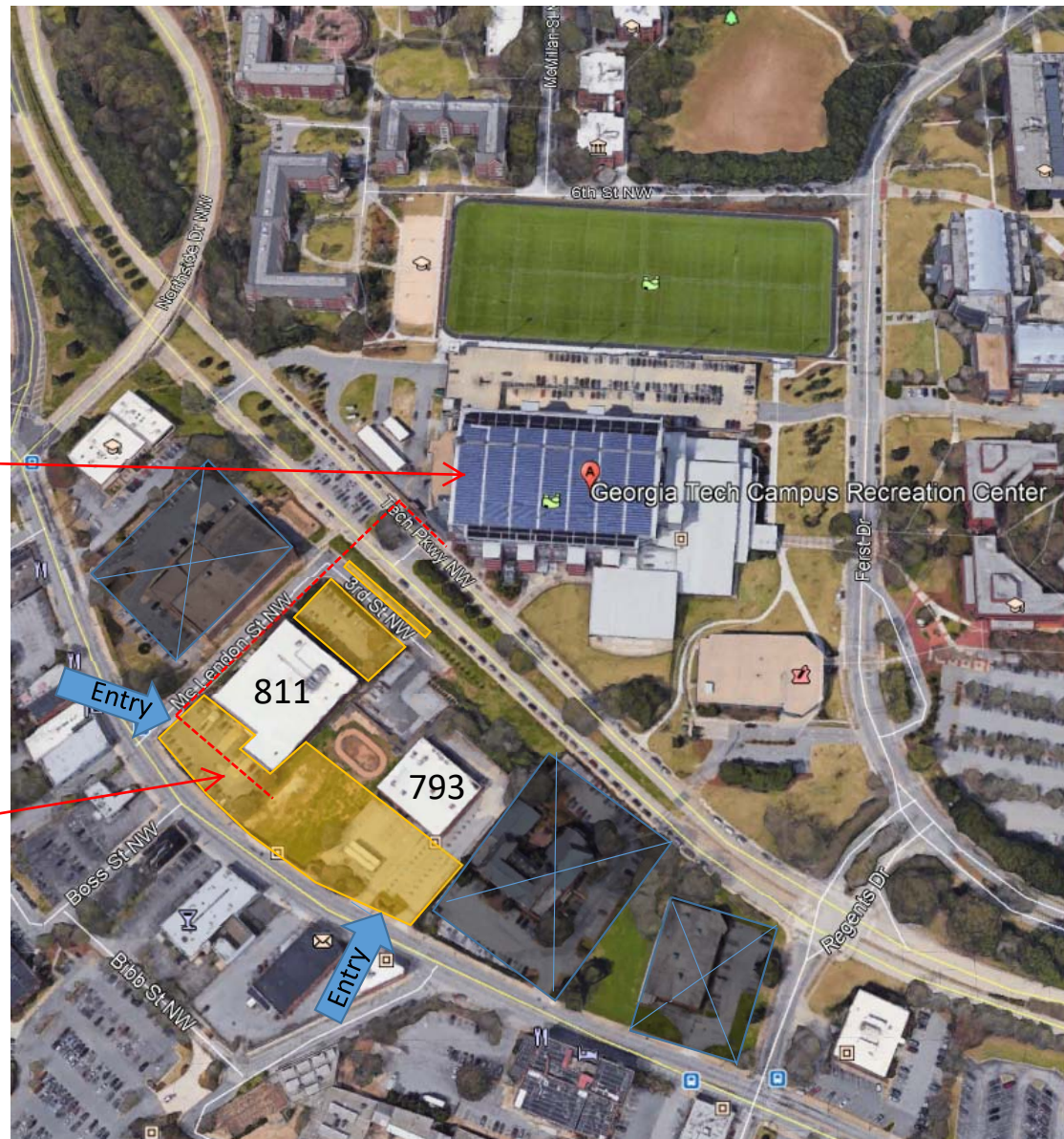
Walk into the front of the CRC. The member service desk will be on your left. Continue walking straight to the desk by the turnstiles.

Use your BuzzCard to enter the turnstiles. If you do not have a BuzzCard, tell them you are with Atlanta Diving Association at the turnstiles and they will grant you access through the turnstiles and downstairs onto the pool deck.





This is the CRC



You can use the address of 793 or 811 Marietta Street to find this parking lot. It is the Environmental Health and Safety Building.